

**PRODUCT LINE**

---

# Broadlines

Florida



# Table of Contents

Frozen	3
Processed Meats	15
Bakery	24
Seafood	28
Deli	33
Dairy	38
Speciality Grocery	41
Food Safety	48

## **FROZEN**

Harvest Sherwood offers a wide variety of trusted brands. Build your frozen foods business with quality products to delight your customers.





## FROZEN

More than a bite and less than a full meal, frozen snacks are ever growing in popularity. We offer a range of tasty options that provide shoppers and their families with convenient, on-the-go snacks that are easy to make.

### BURGERS



#### Grill Master / Flanders

596142 160 4 OZ Grill Master Beef Patty

#### Miami Beef

100155 6 2 LB Angus Beef Patties, 5.30 OZ



## FROZEN

Harvest Sherwood is proud to offer plant-based product options to our partners. Delicious and savory products that are healthy, eco-conscious and 100% meat-free.

### VEGETARIAN/ PLANT-BASED OPTIONS



#### Beyond Meat

27476	8	14 OZ	Original Bratwurst 4 ct
27477	8	14 OZ	Hot Italian Sausage 4 ct
27840	12	1 LB	Grind
27369	8	8 OZ	Burgers
28281	12	7.4 OZ	Spicy Breakfast Sausage 6 ct
28282	12	7.4 OZ	Classic Breakfast Sausage 6 ct
28489	12	8.3 OZ	Breakfast Sausage Link 8 ct
28456	8	10 OZ	Italian Meatball 12 ct



## FROZEN

Family dinners have just gotten simpler with our variety of frozen chicken products. Quality chicken with the convenience of being frozen means that dinner is sure to be a success on any night!

### CHICKEN, BREADED



#### Koch Foods

593609 2 5 LB Chicken Mini Cordon Bleu



## FROZEN MEAT/ ASSORTED

Whether it be taco night or a casual ham sandwich, our frozen meat brands offer satisfying meal options for almost any occasion.

### HAM, SMOKED



#### Smithfield

548084 1 22 LB Smoked Sliced Ham

### TURKEY, GROUND



#### Circle A Brand

592843 24 1 LB M/S Turkey Chub

**MEATBALLS**



**Buono Vita**

520720 2 5 LB Chicken / Beef Meatballs, 1 OZ

**TURKEY, GROUND**



**Carolina**

508850 2 10 LB Ground Turkey



**FROZEN**

The delectable ingredients of our pastas have been frozen at the peak of freshness for the best flavor experience for you and your family.

**PASTA**



**Matarazzo**

103589	20	10.6 OZ	Spinach Cheese Ravioli
103590	20	10.6 OZ	Three Cheese Ravioli



## FROZEN

A meal just is not complete without french fries! Harvest Sherwood offers a range of tasty frozen fries in a variety of sizes and offerings. These are crowd pleasers for adults and kids alike!

### FRENCH FRIES



#### Interfries

595660	6	5 LB	Fries 1/2" Crinkle Cut
505404	6	5 LB	Fries 3/8" Regular Cut



## FROZEN

Empanadas are the Latino favorite that have gone mainstream! Try our frozen empanada dough that delivers fresh baked, crispy goodness, for whatever filling you choose to put inside them!

### DOUGH



#### Matarazzo

103593	18	19.4 OZ	Empanadas Criollas Dough
103594	18	19.4 OZ	Empanadas Hojaldre Dough



## FROZEN

Our Latin products offer many authentic flavors that will remind your consumers of the dishes their abuelas made when they were kids. The fresh ingredients have been frozen for your convenience and are bursting with flavor!

### LATIN PRODUCTS



#### El Tinajon

596883	7	4 LB	Yuca
--------	---	------	------

#### Tio Jorge

593977	12	2 LB	Sliced Sweet Plantain
593182	16	1 LB	Plantain Leaves
101305	4	4 LB	Tostones
593075	6	5 LB	Yuca
593076	20	1 LB	Yuca Steak Cut Fries
593077	7	2 LB	Hawaiian Tostones
535305	20	1 LB	Tostones



## FROZEN

Our fruits are frozen while fresh so that they deliver sweet-tasting goodness whenever they're needed. They'll seem as if they're fresh-picked!

### FROZEN FRUIT



#### Big Banana

593074	4	6 LB	Sweet Plantain
--------	---	------	----------------



## FROZEN

For those who are health conscious and need convenient options, we offer a wide variety of healthy frozen vegetables that are frozen at their peak of taste and nutrition.

### FROZEN VEGETABLES



#### Farmers Value

590339	6	2 LB	Baby Lima Beans
590337	6	8 CT	Corn On Cob
597359	6	2 LB	Pigeon Peas

### FROZEN VEGETABLES



#### Pictsweet

101389	6	28 OZ	Butter Peas
101497	6	28 OZ	Mixed Vegetables
101503	6	24 OZ	Spinach



## PROCESSED MEATS

Harvest Sherwood offers a huge variety of delicious, processed meats that have been prepared for ease and safe consumption.





## PROCESSED MEATS

Whether you like it softer and chewy or extra crispy, we offer some of the best quality bacon brands in a variety of cuts and options.

### BACON



#### Gwaltney

101356	24	12 OZ	Sliced Bacon, Hardwood Smoked
99702	16	12 OZ	Sliced Brown Sugar Bacon
592921	24	12 OZ	Thick Sliced Bacon, Hickory Smoked

### HAM SHANK



#### El Toro/ Morrison

102725	12	20 LB	Morrison Skinless Smoked Ham Shank 4 PC
--------	----	-------	---



## PROCESSED MEATS

An all-around American favorite for BBQs, picnics and ball games, our hot dogs are among the best brands available.

### HOT DOGS/FRANKS



#### Gwaltney

592932	24	12 OZ	Chicken Hot Dog
592918	8	48 OZ	Original Chicken Hot Dog Bun Length
592917	8	48 OZ	Traditional Chicken Hot Dog Pork & Beef

#### Bar S

101523	4	48 OZ	Quarter Pound Beef Franks Jumbo
--------	---	-------	---------------------------------



**HOT DOGS/FRANKS**



**Nathan's**

102196	12	12 OZ	Beef Frank BNL 8 ct
102197	12	12 OZ	Beef Frank Skinless 8 ct
102198	12	12 OZ	Beef Frank with Cheese 8 ct
102199	12	10 OZ	Beef Frank All Natural 6 ct
102200	12	12 OZ	Beef Frank Jumbo 5 ct
102201	12	11 OZ	Beef Frank Angus 6 ct



**PROCESSED MEATS**

Harvest Sherwood's lunchmeats are no Bologna! We offer sliced, deli-style meat which is of the highest quality available.

**PACKAGED LUNCH MEATS**



**Gwaltney**

103395	12	16 OZ	Original Sliced Chicken Bologna
--------	----	-------	---------------------------------



## PROCESSED MEATS

Whether you prefer a smoky bratwurst or a sweet Italian, sausages are always a hit. Our sausage brands span a variety of sizes, styles and flavors.

### SAUSAGE



#### Garcia

590858	12	1.75 LB	Beef Sausage, Hot
590856	12	1.75 LB	Beef Sausage, Mild



#### Patrick Cudahy

596119	4	2.5 LB	La Abuelita Chorizo Seco
--------	---	--------	--------------------------

### SAUSAGE



#### Carando

101544	12	19 OZ	Original Bratwurst Link 5ct
101545	12	19 OZ	Beer Bratwurst Link 5 ct
101549	12	16 OZ	Ground Italian Mild Pork Sausage
102066	12	19 OZ	Italian Mild Sausage Link 5 ct
102067	12	19 OZ	Hot Italian Sausage Link 5 ct



#### Swaggerty's

26738	12	1 LB	All Natural Mild Sausage Roll
27726	12	1 LB	All Natural Hot Sausage Roll
26739	12	1 LB	All Natural Sage Sausage Roll
26740	12	12 OZ	All Natural Mild Sausage Patties 8 ct
26807	12	12 OZ	Premium Pork Sausage Links 14 ct
27724	12	12 OZ	Sausage Patties Tray Pack
27725	12	12 OZ	Sausage Link Tray
288322	12	12 OZ	Maple Sausage Link Tray



**SMOKED SAUSAGE**



**Sunset Farms**

509603	1	11 LB	Smoked Sausage, Hot
509606	1	11 LB	Smoked Sausage, Mild

**SMOKED HAM**



**Jamestown**

593543	24	2.5 LB	Smoked Bone In Ham Steak
593599	6	1 LB	Smoked Shank Port, 6 Pc



**PROCESSED MEATS**

Our meatballs come in a range of different flavors offering you a huge variety of meal options. They're pre-cooked to perfection to make your life easy too!

**MEATBALLS**



**Carando**

101546	12	16 OZ	Italian Style Meatballs 12 ct
101547	12	16 OZ	Rustica Meatballs 8 ct
101548	12	16 OZ	Sicilian Meatballs 12 ct



## BAKERY

Our extensive collection of breads, desserts, muffins and baked treats offer our customers many tasty choices for almost any meal occasion.



## BAKERY

Bagels, breads, sweet baked treats and doughs offer our customers many tasty choices for almost any meal occasion throughout the day—from crispy bagels for breakfast, all the way to post dinner desserts.

### BAGELS



#### Various Brands

516951	12	20 OZ	Bagel Blueberry, Pre Cut
516954	12	20 OZ	Bagel Cinnamon/Raisin
516953	12	20 OZ	Bagel Everything, Pre Cut
516952	12	20 OZ	Bagel Onion, Pre Cut
594453	12	20 OZ	Bagel Plain
516950	12	20 OZ	Bagel Plain, Pre Cut
516955	12	20 OZ	Bagel Whole Wheat, Pre Cut

### BREAD



#### Rich's

101422	32	11 OZ	Sourdough Baguette
--------	----	-------	--------------------



### Cusano's

596545	12	6 PC	Hoagie Roll 8" Plain
594946	12	22 OZ	Artisan Multigrain Bread
594947	12	18 OZ	Artisan Raisin Walnut Bread
594948	8	31 OZ	Deli White Sliced Thin 8 Cut

### BREAD DOUGH



### Rich's

100736	24	19.5 OZ	French Bread Dough
--------	----	---------	--------------------



### Bakery Corp

592811	12	28 OZ	Dough Raw Wheat Mountain Bread, 12 PC
592810	12	28 OZ	Dough Raw White Mountain Bread, 12 PC

### CROISSANT



### Toufayan

516960	10	13.2 OZ	Croissant Mini
--------	----	---------	----------------

### DESSERT



### Rich's

100757	96	3.5 OZ	Apple Turnover
--------	----	--------	----------------

### DONUT DOUGH



### Rich's

100758	240	1.75 OZ	Ring Donut Dough
--------	-----	---------	------------------

### PITA BREAD



### Toufayan

516955	12	20 OZ	Bagel Whole Wheat, Pre Cut
516911	12	12 OZ	Pita Onion Pocket, 6"
516915	12	12 OZ	Pita PL, 6"
516909	12	12 OZ	Pita Wheat





## SEAFOOD

Packed fresh for your convenience, our seafood brands and offerings are sure to be the catch of the day!



## SEAFOOD

A wide range of shellfish, smallfish and whitefish, makes up our seafood brands and varieties. Serve up the flavors of the sea for dinner tonight!

### KINGFISH



#### Kingfish

591402      66 LB      Whole, 4up

### SALMON



#### Nature's Best

596511      12      1 LB      Salmon Portions

**SNAPPER**



26890      22 LB      Snapper Red, Whole, 2-4 lb

**SWAI**



**Nature's Best**

28551	1	10 LB	Swai Fillet 5-7 oz
597972	1	15 LB	Swai Fillet 7-9 oz IQF
99545	10	2 LB	Swai Fillet 5-9 oz IQF
595879	1	10 LB	Swai Fillet 8-10 oz IQF

**TILAPIA**



**Nature's Best**

596521	10	2 LB	Tilapia Fillet
528480	1	10 LB	Tilapia Fillet, 3-5 oz IVP
596520	10	1 LB	Tilapia Fillet

**TILAPIA**



597717		40 LB	PL Tilapia Black WGS 550-750 oz, IWP
593276	1	10 LB	Tilapia Fillet Short, With Tail 3-5 oz IVP
528482	1	10 LB	Tilapia Fillet, 5-7 oz IVP

**CRAB**



**Sugiyo**

593043    10    2 LB    Alaskan Snow Legs, Surimi

**HERRING**



**Merex**

591587      10 LB      Smoked Herring Fillet, Boneless Skinless

**POLLOCK**



**Merex**

591583	20	16 OZ	Salted Pollock, Boneless & Skinless
591584	30	12 OZ	Salted Pollock, Boneless & Skinless

**SQUID**



528342      22 LB      Squid Tubes, U-10, 40% Glaze





## SHRIMP

Shrimp is a go-to choice for almost any seafood lover. Our many choices for shrimp varieties feed the need for this popular little crustacean!

### COOKED SHRIMP, PEELED & DEVEINED



#### Nature's Best

99486	10	1 LB	26/30 Cooked Shrimp, Tail On
99488	10	1 LB	51/60 Cooked Shrimp Peeled & Deveined, Tail Off
99490	10	1 LB	71/90 Cooked Shrimp Peeled & Deveined, Tail Off

### RAW SHRIMP



#### Nature's Best

99489	10	2 LB	16/20 Raw Shrimp EZ Peel, Tail On
593517	5	3 LB	21/30 Raw Shrimp EZ Peel, Tail On
99648	5	2 LB	26/30 Raw IQF Shrimp P&D Tail On

## DELI

Our delicatessen-style meats and cheeses are of the finest quality and feature the best brands available. Fire up the slicer and get ready to make legendary sandwiches!





## DELI COUNTER CHEESE

Our deli counter cheeses come in a variety of flavors, sizes and styles for all your deli needs. From the savory to the spicy, all our cheeses are deli staples!

### CHEESE LOAF



#### Dinner Bell Creamery

101259	6	5 LB	Creamery White American Cheese Loaf
101258	6	5 LB	Creamery Yellow American Cheese Loaf

#### Sommer Maid Creamery

596483	8	6 LB	Creamery Mozzarella Cheese Loaf
595162	3	12 LB	Creamery Provolone

#### Various Brands

596082	6	6 LB	Muenster Cheese
507036	4	5 LB	White American Cheese, Pre Sliced



## CHEESE LOAF



### Dutch Farms

103796	4	5 LB	American Cheese 120 Slice Yellow
103797	6	5 LB	American Cheese Bulk Loaf Yellow



### Dutch Farms

103799	8	6 LB	Deli Reserve LMPS Mozzarella
103800	2	6 LB	Deli Reserve Provolone



### Dutch Farms

103801	6	6 LB	Wisconsin Muenster Cheese
103805	2	6 LB	Pepper Jack Cheese



## DELI COUNTER MEAT

It's just not a sandwich without meat! Our variety of deli meats are sealed fresh and ready to go behind your counter. Offer your shoppers all the delicious meat options we have available.

### LUNCH MEAT



#### Butterball

597862	2	7-9 LB	Turkey Breast Natural Roast Gold
--------	---	--------	----------------------------------



#### Carolina

508840	2	7-9 LB	Deli Turkey Ham 20%
508845	4	3.25-4 LB	Turkey Pastrami

### LUNCH MEAT



#### Carando

551610	3	6 LB	Centurion Genoa Salami
551602	3	5.7 LB	Centurion Hard Salami
551612	4	2 LB	Sandwich Size Pepperoni
551616	1	2 PC	Boneless Prosciutto
551632	2	6 LB	Mortadella Deli Cut
102909	4	3 LB	Hard Salami Half
102910	4	3 LB	Genoa Salami Half

#### El Toro / Morrison



593111	2	14 LB	El Toro Cooked Ham 50% Low Sodium
594933	2	10 LB	El Toro Ham Old Fashioned Jamon Viejo
594932	2	10 LB	El Toro Ham Sweet Serrano
591470	3	14 LB	El Toro Imperial Cooked Ham 42 LBS
594252	2	10 LB	El Toro Regular Ham Serrano 2PC
102931	2	13 LB	El Toro Sweet Cooked Ham 35% 26 LBS

#### El Toro / Morrison



523290	3	9 LB	EL Toro CLS Ham Serrano Whole Muscle
594009	2	10-12 LB	El Toro Serrano Criollo Ham 2 PC
523296	4	5-6 LB	El Toro Cooked Pork Pierna 4 CT
597099	2	9 LB	El Toro Virginia Smoked Ham
597100	2	10.5 LB	El Toro Smoked Honey Cured Ham

#### El Toro / Morrison



590596	3	10 LB	Morrison Buffet Ham
102536	2	11 LB	Morrison Black Forest Ham
592880	2	13 LB	Morrison Cooked Ham 35% 26 LB
598093	2	12 LB	Morrison Ham BOLO

## DAIRY

From kitchen staples to the exotic, Harvest Sherwood offers a wide range of wholesome and calcium-rich dairy products.



## DAIRY

One thing is true; life is great and cheese makes it even better! We offer a range of cheese varieties in many formats and pack sizes.

### CHEESE



#### Dutch Farms

592734	12	12 OZ	American Cheese Singles Yellow-16 Slices
103610	48	12 OZ	American Cheese Singles Yellow-16 Slices

### CHEESE - SHREDDED



#### Dutch Farms

103641	12	8 OZ	Super Fancy Mild Cheddar Shredded
103642	12	8 OZ	Super Fancy Mozzarella Shredded
103643	12	7 OZ	Super Fancy Sharp Cheddar Shredded
103645	12	6 OZ	Super Fancy Gouda Shredded
103655	12	8 OZ	Super Fancy Quesadilla Shredded

**CHEESE - BAR**



**Dutch Farms**

103664	12	8 OZ	Mild Cheddar Bar
103666	12	8 OZ	Sharp Cheddar Bar
103673	12	8 OZ	Marble Jack Bar
103675	12	8 OZ	Pepper Jack Bar
103676	12	8 OZ	Muenster Bar

**CREAM CHEESE**



**Dutch Farms**

103707	36	8 OZ	Cream Cheese Bar
--------	----	------	------------------

**STRING CHEESE**



**Dutch Farms**

103720	12	10 OZ	Snack String Cheese Mozzarella
--------	----	-------	--------------------------------

**WHIP TOPPING**



**Rich's**

597016	12	32 OZ	Gold Label Whip Topping, Non Dairy
503083	12	32 OZ	Whip Topping, Non Dairy

**SPECIALTY GROCERY**

We offer a variety of delicious specialty items which fit into your shoppers' different meal occasions for all times of the year.





## OLIVE OIL

Olive oil is a staple of many sauces, sautéed entrées, and of course a must for salad dressings. Whatever you're cooking up, our quality olive oils are a must for your next meal.



### Matarazzo

103598	12	16.9 OZ	Extra Virgin Olive Oil
103599	12	50.72 OZ	Extra Virgin Olive Oil



## PASTA

Offer a small taste of Italy with our pastas that include some of the best-quality brands available.



### Matarazzo

103595	28	8.8 OZ	Oven Ready Lasagne
103596	12	14.1 OZ	Gluten Free Penne
103597	25	14.1 OZ	Gluten Free Spaghetti



## SEASONING

They say that variety is the spice of life and Harvest Sherwood offers a variety of spices! So spice it up by adding some real flavor to everyday meals.



### Badia

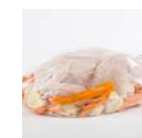
543472	6	7 OZ	Adobo Without Pepper
522878	6	1.75 LBS	Complete Seasoning®
522920	12	12 OZ	Complete Seasoning®
522945	8	3.5 OZ	Complete Seasoning®
522936	8	2 OZ	Cumin Ground
523071	8	4.5 OZ	Garlic Salt
592371	6	6.75 OZ	Sazón Tropical®
522992	8	1.75 OZ	Yellow Coloring/Amarillo



## GENERAL MERCHANDISE

Store, seal, pack and protect all your food items with our range of General Merchandise items sure to keep everything fresh and safe.

### BAGS / CLEAR / BREAD



596712	500 CT	10x8x24	Chicken Bags, 10 X 8 X 24
596708	1900 CT	16x28	Green Pull & Pack, 16 X 28
527886	3300 CT	15x20	Pull & Pack Clear Bags, 15 X 20
596710	500 CT	16x28	White Paper Bag, 20 LB

### CONTAINERS / PLASTIC / HINGED



596733	100 CT	90 OZ	Turnover Container
--------	--------	-------	--------------------

# GENERAL MERCHANDISE

## CUPS / DELI / SOUP



596866	500 CT	16 OZ	16 Oz Deli Cup
596753	500 CT	8/16/32 OZ	Deli Cups Lids, Fits 8 OZ/16 OZ/32 OZ

## FILM / PAPER / WRAP / SHEETS



596696	1 EACH	5000FT	18" Meat Film
--------	--------	--------	---------------

## FOAM TRAYS



592260	100 CT	1014	1014 White Foam Tray
527827	250 CT	25S	25S White Foam Tray

## GLOVES



595345	1000 CT	100 CT	Powder Free Gloves, XL
--------	---------	--------	------------------------



# GENERAL MERCHANDISE

## MEAT PADS / NETS



592337	2000 CT	4X7	White Driloc, 4 X 7
--------	---------	-----	---------------------

## SUPPLIES / JANITORIAL



596718	200 CT	38 GAL	Clear Garbage Bags, 38 Gallon
--------	--------	--------	-------------------------------



# Food Safety

## **IT'S OUR COMMITMENT, EVERY STEP OF THE WAY**

---

Not only does Harvest Sherwood Food Distributors, Inc. commit itself to supplying product that's right for our customers, and delivered on time, behind the scenes we're making sure the food product we carry is safe and meets the comprehensive standards of the agencies that guide us.

Our distribution centers follow Food and Drug Administration (FDA) standards for food safety and food defense and, through the use of our warehouse management system (WMS), product traceability is accomplished without the burden some food companies may experience through complicated paperwork; we're automated! Automation helps make us successful. But success doesn't come easy, it takes work and commitment no matter the level or area within our operations.

Food safety is an essential aspect of all processes. This includes, temperature verification and shelf life of the product we receive, storage and cycle management, and selection accuracy. We do it all while maintaining a food warehouse that meets the strict sanitation and quality requirements of our biggest critics - ourselves. Doing so allows us to be competitive and continue as a leader in the markets we serve.

As a leader, we do not rest. We continue to evaluate our processes and, most importantly, we invest in our resources. Our team members are trained to work efficiently, safe, and always with food safety top-of-mind. Our people are the key to allowing us to meet our commitment to our customers and our customer safety, every step of the way.







## BRANCHES

### East Division

Atlanta GA  
404-348-0001

Cleveland OH  
216-662-8000

Detroit MI  
313-659-7300

Miami FL  
305-687-0000

Orlando FL  
407-296-0818

### West Division

Western Box OR (Portland)  
503-284-3314  
800-547-9801

San Francisco CA (Newark)  
510-790-1915  
866-318-6328

San Diego CA  
619-477-0185  
800-653-2333

Los Angeles CA  
323-587-2383  
800-372-6581

Phoenix AZ  
623-936-0020  
800-883-6328

Salt Lake City UT  
801-972-4114

Denver CO  
720-857-2380  
800-306-6328

Kansas City KS  
913-371-2333  
800-653-6328

**Hamilton Meats** | Chula Vista CA  
619-591-2960 | Toll free 866-796-3287

**[WWW.HARVESTSHERWOOD.COM](http://WWW.HARVESTSHERWOOD.COM)**